

# KRONOS

Quality since 1914

**GRIPTO** | FOREST CRANES FOR PROFESSIONALS



## **Gripto 608 | 609 | 708 | 709**

### » LIGHTWEIGHT AND FLEXIBLE

Kronos popular forest crane-series Gripto is available in four mid-size models: **Gripto 608** and **609**, and **Gripto 708** and **709**. These are our most modern and flexible cranes, and we have improved the working comfort. They are easy to operate, and offer a perfect supplement to our biggest cranes Gripto 1009 and Gripto 1010.

### » PRECISION AND QUALITY

Our cranes are designed to provide maximum durability, range and working comfort. The Gripto-cranes comes with unique precision and speed to work even in tough conditions. The 700-series is equipped with electronic end damping on the extensions. The damping is also available as additional equipment to the 600-series. The xCrane control system automatically reduces the speed before reaching the end position, which gives you an excellent deceleration.

### » EASY TO OPERATE

The Gripto 700-series is also available with Smart Boom Control (crane tip control), which makes the steering easier than ever. The operator can focus on controlling the crane tip instead of managing each part separately.

### » MAXIMUM SPEED

Gripto offers well protected hoses inside the second boom all the way to the rotator. The hose dimension is also big enough to get maximal speed with minimum pressure losses.

xCrane

xCrane PRO

**SMART  
BOOM  
CONTROL !**

## GRIPTO 608

Max outreach	7,8 m
Length of main boom	2,65 m
Length of extension boom	2x1,6 m
Height	1,9 m
Width	1,25 m
Lifting moment, brutto/netto at 4 m	62/41 kNm
Allowable load at 4 m (without grapple and rotator)	1020 kg
Turning angle of boom	360 degrees
Turning moment, brutto	20 kNm
Working pressure	210 bar
Weight, basic loader	1150 kg

## GRIPTO 609

Max outreach	8,5 m
Length of main boom	3,35 m
Length of extension boom	2x1,6 m
Height	1,9 m
Width	1,25 m
Lifting moment, brutto/netto at 4 m	62/37 kNm
Allowable load at 4 m (without grapple and rotator)	930 kg
Turning angle of boom	360 degrees
Turning moment, brutto	20 kNm
Working pressure	210 bar
Weight, basic loader	1180 kg

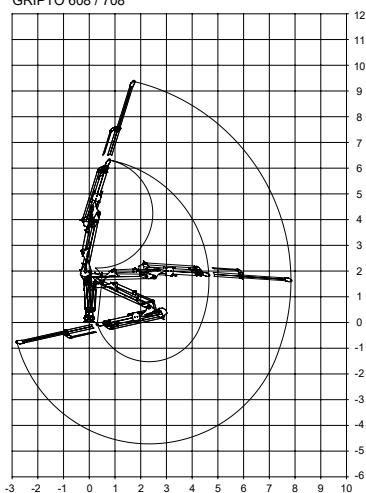
## GRIPTO 708

Max outreach	7,8 m
Length of main boom	2,65 m
Length of extension boom	2x1,6 m
Height	1,9 m
Width	1,25 m
Lifting moment, brutto/netto at 4 m	75/52 kNm
Allowable load at 4 m (without grapple and rotator)	1290 kg
Turning angle of boom	360 degrees
Turning moment, brutto	20 kNm
Working pressure	210 bar
Weight, basic loader	1170 kg

## GRIPTO 709

Max outreach	8,5 m
Length of main boom	3,35 m
Length of extension boom	2x1,6 m
Height	1,9 m
Width	1,25 m
Lifting moment, brutto/netto at 4 m	75/48 kNm
Allowable load at 4 m (without grapple and rotator)	1190 kg
Turning angle of boom	360 degrees
Turning moment, brutto	20 kNm
Working pressure	210 bar
Weight, basic loader	1200 kg

GRIPTO 608 / 708



GRIPTO 609 / 709

