

MIDISOIL dt

100-170 HP



Smallest universal tiller of its kind

It can carry out multiple jobs: crushing stones, recycling materials, stabilizing terrain, re-building and servicing roads, mulching wood... This versatile tiller has an innovative gear transmission system. Integrated cooling protects it from overheating during continuous work on stone and soil.

With the optional 2SPEED gear the rotor speed can be regulated.

The MIDISOIL dt can be equipped with a compacting roller or grader blade, both with hydro-pneumatic levelling.

Standard version and specifications

- > Crushes stones up to 25 cm [10"] Ø, mulches wood up to 25 cm [10"] Ø
- > Tills the soil as deep as 25 cm [10"] and deeper, depending on working conditions
- > Working speed 0-2 km/h
- > ISO 3-point rear linkage cat. 2 central fixed
- > Gearbox 1000 U/min with freewheel
- > Double drive with parallel gear transmission and with integrated cooling
- > Integrated torque limiter
- > ISOBUS system (temperature, cooling, hour counter) with control unit + cable to tractor - requires an ISOBUS tractor
- > Chassis made of wear-resistant steel with internal replaceable plates
- > Tempered counterknives, anvil bar and crushing grid
- > Hydraulically operated hood
- > Chain protection
- > Narrow in-depth skids
- > Rotor with tungsten carbide insert hammers SUPER MONO PROTECT and lateral EXTREME

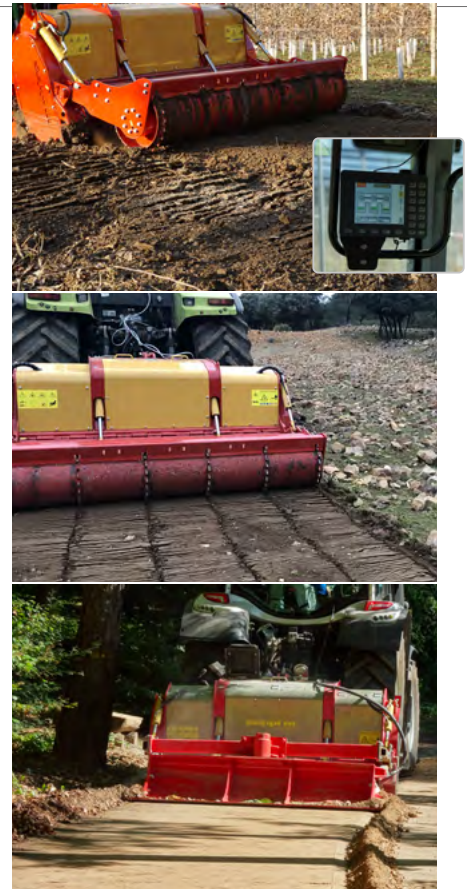
Optional configuration and accessories

- > PTO drive shaft with or without torque limiter
- > ADAM alignment system in combination with 2SPEED gearbox system - available for models 225 and 250 -
- > ISOBUS Terminal for ISOBUS ready tractors
- > RETROFIT - ISOBUS compatible system for older tractors
- > Hydraulically operated compacting roller*
- > Hydraulically operated grader blade*
- > Support skids
- > Hydraulic top link

* roller / grader blade works not in combination

Technical requirements

- > Creep speeds (max. 0,5 km/h) or CVT continuously variable transmission
- > Hydraulic three-point tractor linkage



www.youtube.com/seppimulcher

Specifications · MIDISOIL dt	Nominal power 100-170 HP			
	175 cm [69"]	200 cm [78"]	225 cm [88"]	250 cm [98"]
Working width	175 cm [69"]	200 cm [78"]	225 cm [88"]	250 cm [98"]
Overall width	205 cm [81"]	230 cm [91"]	255 cm [101"]	280 cm [111"]
Depth	113 cm [44"]	113 cm [44"]	113 cm [44"]	113 cm [44"]
Depth with roller	160 cm [63"]	160 cm [63"]	160 cm [63"]	160 cm [63"]
Height	125 cm [49"]	125 cm [49"]	125 cm [49"]	125 cm [49"]
Weight (base value w/o opt.)	1.700 kg [3,750 lb]	1.950 kg [4,300 lb]	2.150 kg [4,740 lb]	2.370 kg [5,230"]
Weight with roller (base value)	1.890 kg [4,170 lb]	2.150 kg [4,740 lb]	2.400 kg [5,290 lb]	2.640 kg [5,820"]
Gear transmission	2	2	2	2
SUPER MONO PROTECT + EXTREME	2+31+2	2+36+2	2+41+2	2+46+2

Tools

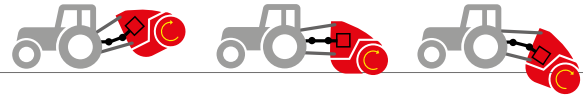


Fixed hammer with tungsten carbide tips
SUPER MONO PROTECT



Lateral fixed hammers with tungsten carbide tips
SUPER MONO EXTREME

Innovative transmission system



Option on model 225 and 250:

ADAM Alignment system: Hydraulic tilting of the mulcher with PTO shaft alignment while keeping equal and W-shaped PTO shaft angles. This prevents damage to the PTO shaft and supports an ideal adaptation to the conditions of the ground

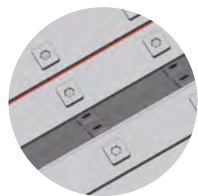
-> faster working, higher lifting, longer lifetime of the PTO shaft

2SPEED Thanks to the 2SPEED system, the rotor speed can be switched by a mechanical lever in the main gearbox - 1000 rpm for mulching on the surface - 540 rpm for working in the soil - maintaining the speed of the PTO on the tractor at 1000 rpm. This feature allows a higher torque and hence better processing both during mulching wood (faster rpm) and crushing rocks and soil (slower rpm).



ADAM

video ADAM
www.seppi.com/en/adam



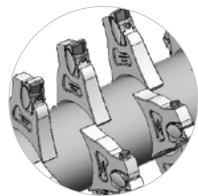
Chassis made of high tensile and wear-resistant steel with replaceable wear plates

AR400
WEARPLATE



GEAR DRIVE

Transmission concept with spur gear motor, especially slim and space saving - with integrated cooling



Rotor: combination of fixed hammers with tungsten carbide tips and anti-wear hammer support; tempered counter knives for a perfect mulching result

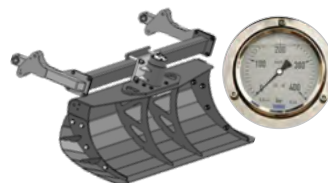
CARBIDE



Adjustable anvil bar & crushing grid to adjust the degree of mulching



Hydraulically operated compacting roller for depth control, may also be used as guard frame incl. roller scraper (option)



Hydraulic grader blade (option), height and rotation adjustment, with hydraulic pneumatic damping incl. lateral extensions · pressure gauge to control work of the grader blade