

seppi m.®

MULCHING EQUIPMENT SPECIALISTS



Quality by Design

STUMP & ROOT GRINDERS

MEC. OR HYDR. OPERATING

**KASTOR :: KASTOR_{HYD} :: MIDI-KASTOR_{HYD}
FC :: STAR-FC :: STAR-FC_{HYD}**



Discover the Advantages of **seppi m.**

INNOVATION

- > over 70 years experience, mulching equipment specialists since 1971
- > continuous research for new solutions and technologies
- > optimal material

QUALITY

- > every machine is tested before leaving the factory
- > use of the best components only
- > low wear

RELIABILITY

- > excellent working machines
- > easy maintenance
- > fast and efficient after sales service

STUMP & ROOT GRINDERS & TILLERS



It's so easy to eliminate stumps and roots!

The stump grinders made by SEPPi M. are strong and efficient machines. Wood and other vegetation will be tilled, ground finely and incorporated into the soil, where it will quickly decompose. The soil will be ready to plant or for other uses.

Operating

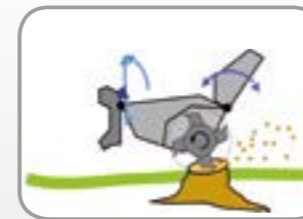
- Stump and root tillers are operated by
- tractor PTO shaft
- excavators, arm mounted

These machines have been developed for particularly high performances. Even hard tasks can be accomplished in a short time. Enjoy the many advantages of these machines!

Typical use

- > in agriculture and forestry they will grind and mulch stumps and roots of felled material and till the soil
- > in greenspace maintenance they will remove stumps from parks and road sides
- > in construction and energy they will eliminate stumps and roots from construction sites

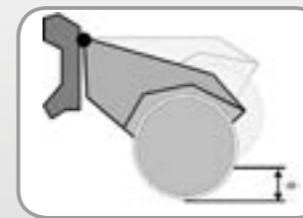
How to work with the stump and root grinders of the series KASTOR and FC?



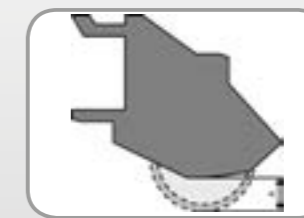
KASTOR
Working principle: standing machine. The hood can be lifted and lowered, in order to reach deep stumps. The rear hood also manages the way the mulched material is distributed.



FC
Working principle: tills the soil continuously, prepares land for new plantations. The STAR-FC crushes stones up to 15 cm Ø.



KASTOR
Depth of work up to 50 cm [20"].



FC
Depth of work up to 30 cm [12"].

The series of stump and root grinders by SEPPi M.

	tractor	excavator
grinds stumps any diameter and at depth	KASTOR	MIDI-KASTOR hyd, KASTOR hyd
grinds stumps and roots, and tills the soil continuously	FC, STAR-FC	STAR-FC hyd

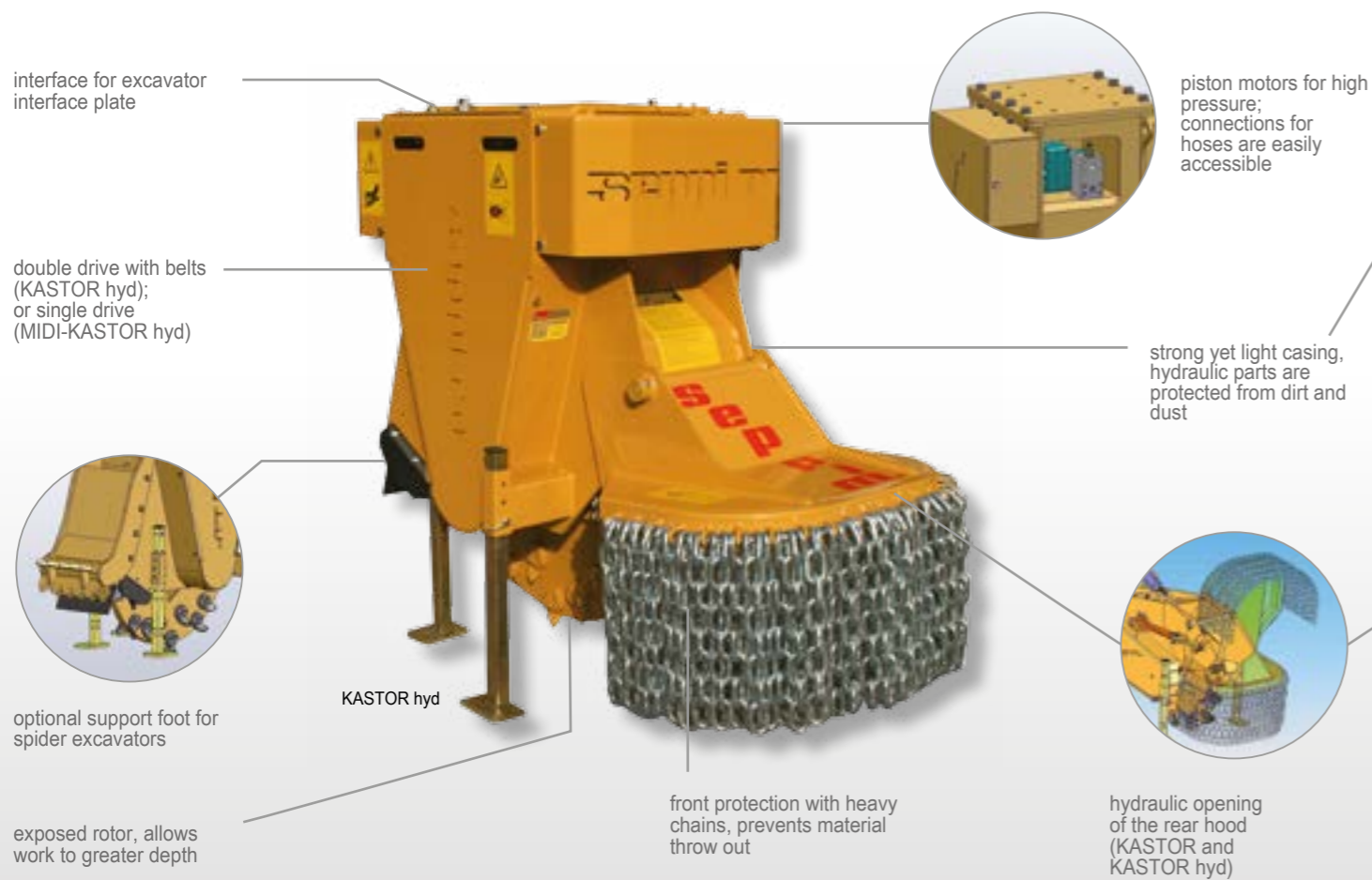
The information and images contained in the present documentation are to be considered reference values. SEPPi M. may carry out even substantial changes without previous notification.

The beaver among the SEPPi machines: Grind your stumps with great power!

Features	KASTOR	KASTOR hyd	MIDI-KASTOR hyd
grinds stumps	as deep as 35 cm [14"] and any diameter	as deep as 50 cm [20"] and any diameter	as deep as 30 cm [12"] and any diameter
rotor	fixed knives with tungsten tips	fixed knives with tungsten tips	fixed knives with tungsten tips
front protection	double chains	double chains / rubber	double chains / rubber
attachment for	tractors with cat. 2 three-point linkage	for excavators 15-30 t [30,000 - 60,000 lbs]	for excavators 5-15 t [10,000 - 30,000 lbs]
drive	1000 rpm gearbox with freewheel	via 2 hydr. motors of choice	via 1 hydr. motor of choice
prime mover requirements	creep speed	high flow hydraulics	high flow hydraulics
transmission	both ends	both ends	single end
number belts	10	10	5
hydraulically operated hood	S	S	X
side shift	hydraulic outrigging 55 cm to the left & right	any moved by excavator arm	any moved by excavator arm

S: standard, X: not available

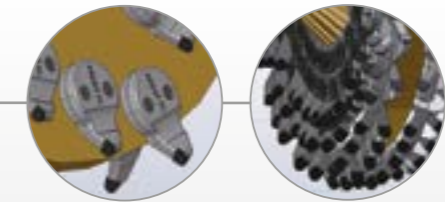
Remove stumps from parks, arable land, road sides, parkings and other open spaces. The KASTOR machines grind stumps as deep as 35 - 50 cm [14"-20"], according to the model.



KASTOR: side shift A = 110 cm [43"]
The KASTOR hyd is operated by the excavator arm.



Very aggressive knives. The specially developed angle of cut allows an ideal use of power.



Options	KASTOR	OPT
PTO shaft with constant velocity joint	O	056
electric remote control	O	333
support wheels	O	036
chevrons for transport on public roads	O	162

Options	KASTOR hyd	MIDI-KASTOR hyd	OPT
interface plate	O	O	218
190° rotation interface plate	O	O	372
support foot for spider excavator	O	X	130
hydraulic motor diff.types at choice	O	O	O

O: option - X: not available



	working width cm ["]	overall width cm ["]	depth cm ["]	height cm ["]	weight* kg [lb]	rotor disc Ø cm ["]	fixed knives #	pressure bar [PSI]	oil flow l/min [US-GPM]	HP min-max
KASTOR	11 [4,3]	76 [30]	230 [91]	130 [51]	1.050 [2,310]	90 [35]	50	X	X	80-180
KASTOR hyd	11 [4,3]	88 [34]	180 [71]	130 [51]	870 [1,920]	90 [35]	50	150-350 [2,200-5,000]	100-290 [26.4-76.6]	X
MIDI-KASTOR hyd	10 [3,9]	80 [31]	110 [43]	115 [45]	450 [990]	60 [24]	32	150-350 [2,200-5,000]	60-180 [15.8-47.6]	X

* The weight of the machine refers to standards, without any options, and may vary.



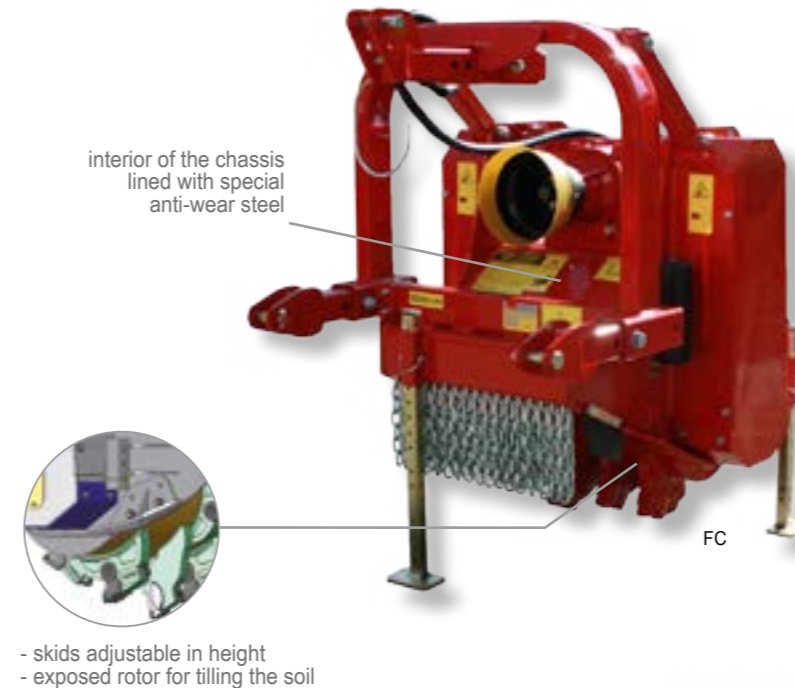
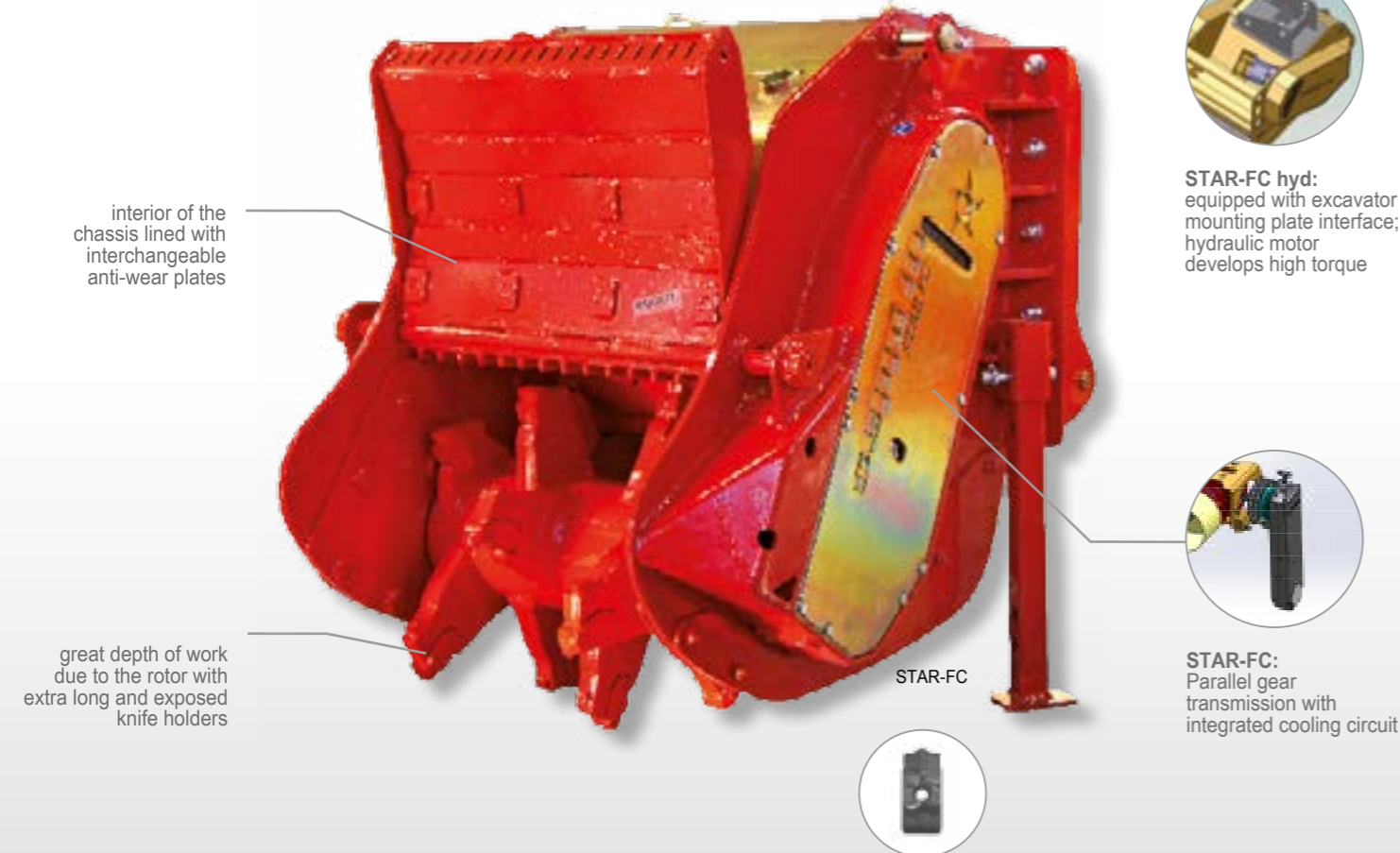
**Grind stumps & roots and tills the soil.
No matter what prime mover you use...**

Features	FC	STAR-FC	STAR-FC hyd
tills and grinds as deep as	27 cm [11"]	30 cm [12"]	30 cm [12"]
grinds stumps up to	25 cm [10"] Ø	40 cm [16"] Ø	40 cm [16"] Ø
crushes stones up to	-	15 cm [6"] Ø	15 cm [6"] Ø
rotor	fixed knives with tungsten tips	fixed knives with tungsten tips	fixed knives with tungsten tips
protection	double chains	double chains	double chains
work-at-depth skids	S	S	S
mounting	cat. 2 3-point rear linkage	cat. 2 3-point rear linkage	excavators 15-35 t [33,070-77,160 lb]
transmission	double drive with 10 belts	double drive; parallel gear transmission	single drive with 1 belt
number belts	10	2	1
hydraulically operated hood	S	S	S

S: standard

The FC and STAR-FC are machines suitable especially for grinding and mulching small and medium stumps and rootstocks. They are especially efficient when working in orchards, tree nurseries, christmas tree plantations and wherever trees grow in lines. The machine will work continuously and leave a line of prepared soil, ready for new planting.

Even with stones in the ground, the STAR-FC machines work perfectly. Use them for land reclamation, renewal of arable land, for the construction and maintenance of gravel roads and road sides or on construction sites. The hydraulic version (for excavators or skid steer loaders) allows easy work in hard to reach areas.

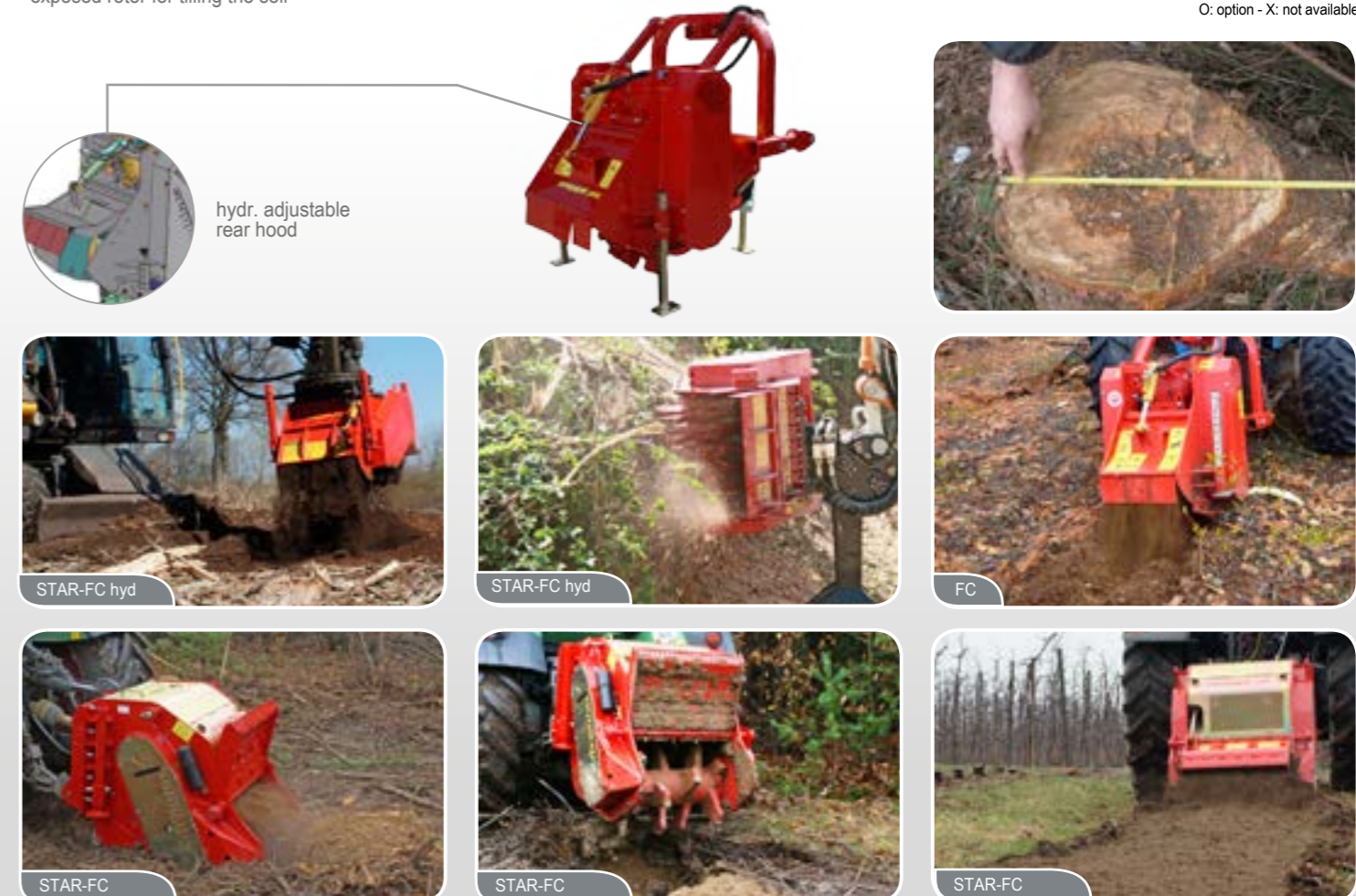


Options	FC	STAR-FC	STAR-FC hyd	OPT
PTO shaft	O	X	X	008
PTO shaft with automatic torque limiter	O	O	X	009
adjustable support wheels	O	X	X	036
interface plate for excavator mounting	X	X	O	218
hydraulic motor M-BOOST™	X	X	O	413
chevrons for transportation on public roads	O	O	X	162

O: option - X: not available

	working width cm ["]	overall width cm ["]	depth cm ["]	height cm ["]	weight* kg [lb]	fixed knives #	pressure bar [PSI]	oil flow l/min [US-GPM]	HP min-max
FC	45 [18]	97 [38]	146 [57]	150 [59]	940 [2,070]	18	-	-	70-130
	60 [24]	101 [40]	146 [57]	150 [59]	1.010 [2,220]	24	-	-	
STAR-FC	75 [30]	104 [41]	145 [57]	130 [51]	1.590 [3,500]	18	-	-	120-260
	100 [39]	129 [51]	145 [57]	130 [51]	1.720 [3,790]	22	-	-	
STAR-FC hyd	75 [30]	104 [41]	145 [57]	130 [51]	1.330 [2,920]	18	200-350 [2,900-5,000]	120-320 [31.7-84.5]	-
	100 [39]	129 [51]	145 [57]	130 [51]	1.500 [3,300]	22			
	125 [49]	154 [61]	145 [57]	130 [51]	1.680 [3,700]	26			

* The weight of the machine refers to standards, without any options, and may vary.



The Advantage of High Quality

Mulching Equipment Pioneers

Founded in 1939 by Max Seppi, SEPPi M. is now one of the foremost manufacturer in its sector - not only in Europe, but worldwide. A pioneer like no other, SEPPi has been manufacturing mulching equipment for more than 40 years. SEPPi's mission is "To improve the professional's work through innovative and efficient solutions".

The many years of experience, together with the tireless research for more advanced technologies and more resistant materials result in the premium quality of the SEPPi equipment with tough machines that are reliable even under extreme working conditions.

The biggest gratification over the past 75 years has been our satisfied customers, who have benefitted from long and efficient work with the SEPPi equipment – a continuous motivation to keep on focusing on high quality! The family-based character of the company today being led by the third generation, stands for fair and responsible business relationships.

Discover the many advantages of owning SEPPi equipment!



AGRICULTURAL, FORESTRY AND INDUSTRIAL MOWERS

SEPPi M. S.p.A. - Zona Artigianale 1 - I-39052 Caldaro (Bolzano) Italy
Tel. +39 0471 963550 - Fax +39 0471 962547 - sales@seppi.com - www.seppi.com

AUTHORIZED DEALER

Ask our team for further information!