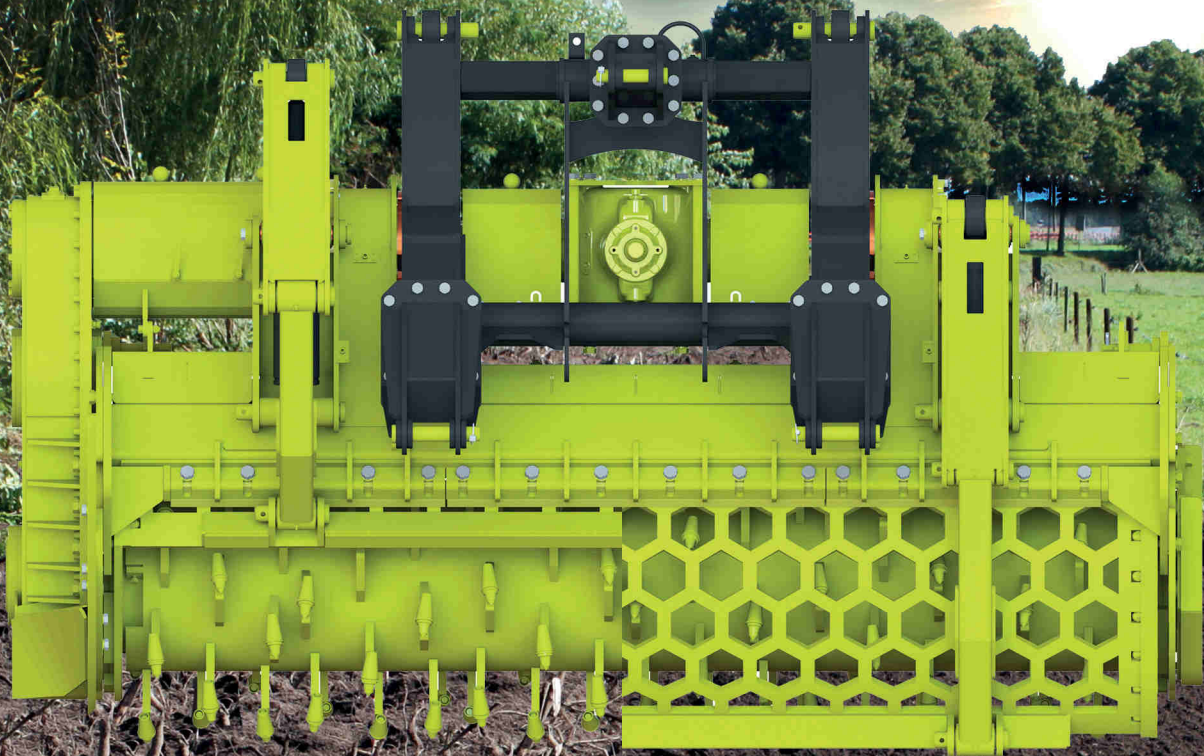


# MERICRUSHERS

MJF-240 S



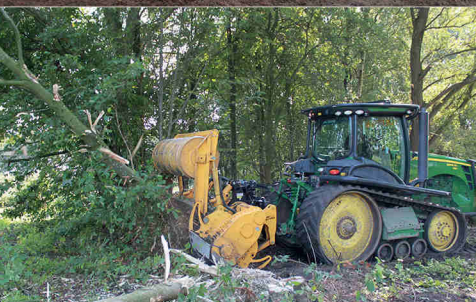
All in one.



**SUOKONE**

# MERICRUSHERS

MJF-240 S



Top-of-the-range features – all in the same machine.

For versatile mulching and tilling

## TECHNICAL SPECIFICATIONS:

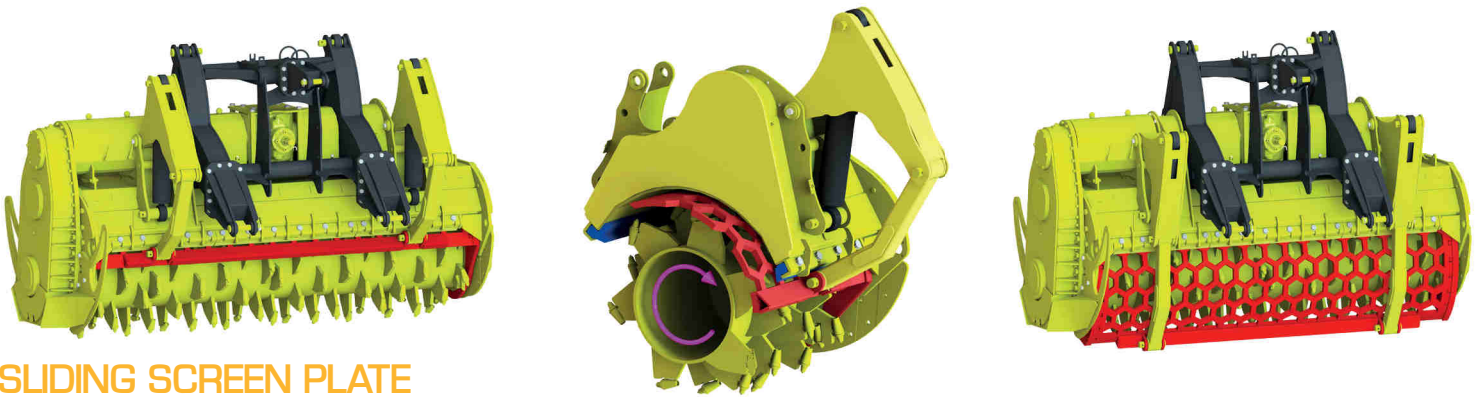
MJF-240 S-STX MJF-240 S-DTX

		MJF-240 S-STX	MJF-240 S-DTX
Rotor diameter Ø	mm	800	800
Rotor width	mm	2435	2435
Total width	mm	2855	3010
Working depth max.	mm	400	400
Weight with equipment	kg	4550	5120
Power range	hp	280-400	280-700
Cutter quantity, STB	pcs	118	118
PTO	rpm	1000	1000

 **SUOKONE**

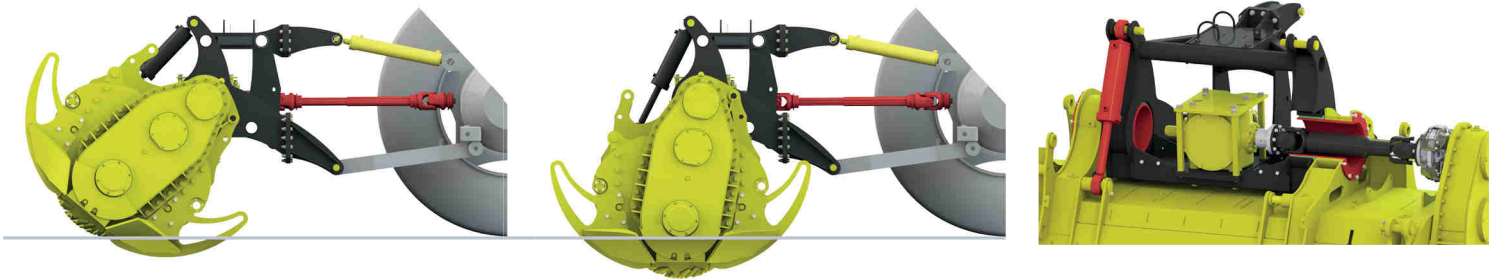
# MERICRUSHERS

Optional equipment and features | MJF-240 S



## SLIDING SCREEN PLATE

The continuously adjustable screen plate is made of strong, high-quality steel. Its optimally positioned and sized hexagonal holes allow the material through at just the right size. Larger-pieces of organic material are first pre-crushed at the rear of the frame by counter blades and then reduced to the required size by the screen plate against the edges of the openings. The screen plate height is hydraulically adjusted from the tractor cab and can also be adjusted during operation. This screening solution guarantees very good results even when used with a stabilising rotor in deep milling and at a low rpm typical of stabilising rotors. This requires less power and keeps the wear and tear on the equipment low.



## ARTICULATED FRAME AND TRANSMISSION

The machine's frame has an articulated joint that makes it possible to adjust the milling depth without adjusting the three-point linkage, ensuring the optimal cardan shaft angle whether milling on the surface or deeper in the ground. The pivot joint is positioned around the secondary transmission midpoint with a strong plain bearing. The actual adjustments are made smoothly with the hydraulic cylinder; this adjustment can also be carried out during operation. The Transmission includes either one or two final gear-boxes, allowing up to 700 horsepower. The transmission is prevented from overloading with a pressure-controlled POC clutch, while a line-mounted slipping sensor warns the driver if the clutch is slipping.



## EQUIPMENT

**Hydraulic rear roller**, with a wide operating area and a large diameter. In the upper position it is used for felling trees and in the lower position for supporting the machine as well as compacting tilled surfaces. Thanks to its large diameter the roller carries the weight of the machine well even on soft surfaces.

**Hydraulic rear plate**, for controlling the flow of material to the counter blade and onward to the crushing process. A mechanical plate is also available. Its position can be adjusted using the rear roller.

# MERICARE



**MERICARE maintenance and spare part services will increase the profitability of your investment.**

At suokone we have understood right from the start, that the products are designed to withstand many decades and therefore spares and wearing parts availability will be first class and reliable.

Our product design also has taken into account the fact that the majority of products can be updated at any time to the latest model, this easily increases the products value as well as second hand value considerably.

Get to know other Suokone versatile product categories:

## MERICRUSHERS



## MERPEATEQ



## MERITRACTORS



## MERIROADEQ



# SUOKONE

**SUOKONE OY**

Lastaajantie 18 | 88610 Vuokatti | Finland

Tel: +358 8 666 2011 | E-mail: suokone@suokone.com

[www.suokone.com](http://www.suokone.com)